



Message from the Chief Executive.

Quick Links

PRACTITIONER GROUPS

[North West Equality & Diversity Network for Housing Practitioners](#)

[Yorkshire and East Midlands Diversity Discussion Forum](#)

[North East Equality & Diversity Network](#)

[South & South West Equality & Diversity Forum](#)

[Midlands Equalities Forum](#)

this issue

Latest From the Network **P.1**

Equality & Diversity News **P.3**

Publications **P.8**

Practitioner Groups **P.10**

Upcoming Events **P.11**

Inside Housing/HDN E&D Survey and keeping the E&D agenda noisily on the table!

Readers of last month's e-briefing will be aware of our E&D survey. The results and covering piece have just appeared in the 13th September edition of Inside Housing and its findings are already generating discussion ahead of the forthcoming NHF's Social Housing Conference in Birmingham and our joint E&D Conference with the CIH in London on 2 October. You can read for yourself the full article via the following link -<http://www.insidehousing.co.uk/home/analysis/room-for-improvement/6528565.article>

Whether in terms of investing in innovative training; investing in our mentoring programmes for staff, board members and tenants; or whether its through continuing to work with our practitioner group network colleagues or our partners such as NHF, CIH, CLES, the EHRC and HREC (ex EHRC consortium), we will at HDN do our utmost to keep the equalities agenda "noisily on the table" as it's more important than ever to ensure that it does not become side-lined!

Public Sector Equality Duty Review

The Government Equalities Office published the Independent Steering Group's review of the public sector equality duty (PSED) it commissioned on 6th September 2013 together with a separate research report that was carried out to inform the review's findings. The stated aim of the review which was launched as part of the Government's Red Tape Challenge was to consider whether the PSED is operating as intended. Its intention was interpreted in the review as promoting equality across the new strands as well as equality outcomes and reducing bureaucracy associated with the previous duties.

The Steering Group's conclusions have in fact confirmed that it is too early to be too conclusive on the implementation of the PSED, so the Steering Group has not made any recommendations to amend the Equality Act 2010. Nevertheless, several recommendations have still been made relating to the implementation of the PSED, including shorter and more bespoke guidance and a greater role for inspectorates in overseeing public authorities' compliance with the PSED. Some of the recommendations are designed to reduce what is considered to be a "burden" placed on small employers;

including procurement processes, as well as restrict data collection and monitoring carried out by public authorities. Although there is reference to the fact that the Steering Group could not reach a conclusion on the effectiveness of the *specific duties* the Chair of the Group has, nevertheless, taken the position that there is a need for amendment or repeal of the specific duties as they apply to England.

The role of *judicial review* in enforcing the PSED is also questioned in the review, and on the same day that the Steering Group's findings were published the government issued a consultation on further reforms to legal aid which includes a section on the role of judicial review in enforcing the PSED.

Two issues for me stand out... firstly the fact that the independent Chair of the PSED Review, Rob Hayward, does little to hide his scepticism about the potential benefits and impact of specific duties. This contributes to the impression that both he and the current Government want to encourage the public sector in England to do as little as possible as far as the PSED is concerned. To quote the Coalition for Racial Equality and Rights:

"...doing less has been a popular strategy for many organisations in the public sector, where they can get away with it. And this Report firmly recommends that they should get away with it."

The second stand out issue for me is the far more positive response towards the PSED and specific duties from the Government administrations in Scotland and, in particular Wales, which we will feature in our next e-briefing.

Benefits of HDN Membership

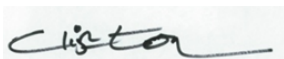
I want to take this opportunity to remind people of the benefits of HDN membership. Our membership scheme is designed to provide staff across your organisation with a comprehensive programme of mentoring support and instant access to information and support on equality and diversity issues. Sometimes not all staff in member organisations are aware of what we offer so we like to remind you now and again. The benefits of membership include:

- Access to the HDN Mentoring Programme. Our mentoring programme runs from October to June and more information can be found on our website
- Free job advertising on our website <http://www.housingdiversitynetwork.co.uk/jobs/>
- Monthly e-briefings – please pass on to others or get them to sign up to receive them.
- Free or discounted places at all Network seminars/events and a discount on training.
- Our enquiry line can be accessed by phone or email and is available to all staff of subscribing organisations.

Many of our services are accessible through our website. All of your staff can register on the website. To do this, they need to go to our website and register on the Login page. They will be issued with a password which gives them access and adds them to our mailing lists for the newsletter, events updates and factsheets. If you have any problems, please do not hesitate to contact us.

Finally, two reminders. Our annual Equality and Diversity conference with the CIH is on the 2nd October in London and our innovative 'Unconscious Bias' Training is on the 17th October in Manchester. For further information please contact info@housingdiversitynetwork.co.uk or call our office for more information on 01484 652 606.

Best wishes



Clifton Robinson, Chief Executive HDN

For further information on any of the above, please email me at Clifton@housingdiversitynetwork.co.uk

Quick Links

ER & D NEWS

[DoH hands out £122m to build new homes](#)

[Charity opens LGBT housing projects](#)

[MPs warn ECO will not tackle fuel poverty](#)

[Charities mapping out crisis loan availability](#)

[Disabled children bedroom tax rules delayed](#)

[Tax boost for existing tenants](#)

[Consumers urged to fight payday loan firms](#)

[3,000 families affected by benefit cap](#)

[Landlord highlights plight of ex-soldiers](#)

[Major flaws revealed in pay-to-stay policy](#)

Equality & Diversity News.

Edinburgh Council is denying emergency hardship payments to tenants affected by the bedroom tax if they spend too much on non-essential items such as cigarettes and alcohol.

Inside Housing, 23rd August 2013

DoH hands out £122m to build new homes

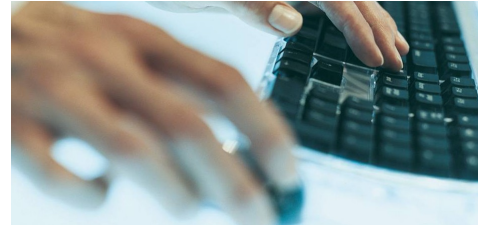
Inside Housing, 24th July 2013

The government has announced that it is handing out £122 million to build homes across the country to help older and disabled people live independently. Care and support minister Norman Lamb revealed 86 successful bidders across England would get a share of £92 million through the Homes and Communities Agency to build 2,875 new homes. London mayor Boris Johnson will be handed almost £30 million for 35 agencies, which will build 669 homes in the capital. The cash comes from a £300 million pot set up by the Department of Health to boost the supported housing market, which it invited local authorities to bid for last year. Mr Lamb said: 'As we know, most people want to be independent in their own homes and as the population ages, more and more of us will need housing that supports us to do that.'
http://www.insidehousing.co.uk/development/doh-hands-out-%C2%A3122m-to-build-new-homes/6527872.article?utm_medium=email&utm_source=Ocean+Media+&utm_campaign=2920091_IH+Care+and+Support+30.7.13&dm_i=1HH2,1QL5N,81190P,66TWK,1

Charity opens LGBT housing projects

Inside Housing, 30th July 2013

A charity has opened two housing projects for homeless lesbian, gay, bisexual and transgender young people. The Albert Kennedy Trust has opened an LGBT safe house in London and a supported housing project specifically for LGBT young people in Greater Manchester. The London project, which is being run with housing association Circle 33, will provide accommodation for at



risk young people for around 21 days while support workers put longer-term plans in place. AKT said 76 per cent of young people who approach the charity in London are looking to escape hate crime or domestic violence they have experienced as a result of coming out. In Manchester the charity has opened a four-bedroom, six to 12-month supported housing project with New Charter Housing Group.
http://www.insidehousing.co.uk/care/charity-opens-lgbt-housing-projects/6527940.article?utm_medium=email&utm_source=Ocean+Media+&utm_campaign=2920091_IH+Care+and+Support+30.7.13&dm_i=1HH2,1QL5N,81190P,66TWK,1

MPs warn ECO will not tackle fuel poverty

Inside Housing, 30th July 2013

An influential committee of MPs has warned the government's £1.3 billion-a-year energy company obligation will not succeed in tackling fuel poverty. The energy and climate change committee says the resources available under ECO are 'insufficient considering the scale of fuel poverty' and urges the government to review its policies to increase investment in improving the energy efficiency of homes. ECO is funded by energy companies through charges they include in their bills to consumers, and the committee says this means it is 'regressive' in that it increases energy costs for poor families to a greater extent than more affluent households. It notes that 'England will be the only country in the UK without a tax-funded energy efficiency programme to address fuel poverty' following the closure of Warm Front in January, and also warns too much money to combat fuel poverty is being spent on helping with bills rather than improving the energy efficiency of homes.

http://www.insidehousing.co.uk/eco/mps-warn-eco-will-not-tackle-fuel-poverty/6527944.article?utm_medium=email&utm_source=Ocean+Media+&utm_campaign=2920091_IH+Care+and+Support+30.7.13&dm_i=1HH2,1QL5N,81190P,66TWK,1

http://www.insidehousing.co.uk/eco/mps-warn-eco-will-not-tackle-fuel-poverty/6527944.article?utm_medium=email&utm_source=Ocean+Media+&utm_campaign=2920091_IH+Care+and+Support+30.7.13&dm_i=1HH2,1QL5N,81190P,66TWK,1

Charities mapping out crisis loan availability

Inside Housing, 31st July 2013

[FOI reveals effects of bedroom tax in Wales](#)

[More than 40,500 new housing benefit claims in a year](#)

[Guidance for tenants to report unscrupulous landlords](#)

[Bedroom tax safety warning](#)

[Minister talks 'doublespeak' over unauthorised Gypsy and Traveller sites](#)

[Housing association pledges to rehome bedroom tax victims](#)

[Housing associations are failing people with dementia](#)

[Repetitive prison sentences disrupt the housing economy](#)

[Cut back on fags and booze to get DHPs, council says](#)

Charities are working together to map out which local authorities are handing out emergency loans to vulnerable people to help them with housing costs. Homelessness charities have had difficulty securing 'crisis loans' since the government transferred the £178.2 million fund for these and community care grants to councils on 1 April. One of the main uses for these loans for homeless people, which were previously handed out by job centres, was to pay for deposits or rent advances to secure private rented sector accommodation. Lisa Doyle, advocacy and influencing manager from the charity Refugee Council, said: 'We are working with other voluntary and statutory agencies to try to ensure that our clients are not left penniless'.

[http://www.insidehousing.co.uk/care/charities-mapping-out-crisis-loan-availability/6527977.article?
utm_medium=email&utm_source=Ocean+Media+&utm_campaign=2810097_IH-Care+and+Support-060813-JK&dm_i=1HH2,108A9,81190P,5W701,1](http://www.insidehousing.co.uk/care/charities-mapping-out-crisis-loan-availability/6527977.article?utm_medium=email&utm_source=Ocean+Media+&utm_campaign=2810097_IH-Care+and+Support-060813-JK&dm_i=1HH2,108A9,81190P,5W701,1)

Disabled children bedroom tax rules delayed

Inside Housing, 2nd August 2013

Regulations protecting certain families with disabled children from the bedroom tax will not be passed until the autumn, despite a judge saying they were 'imminent'. Campaigners lost a high profile legal challenge to the policy after High Court judges refused to overturn the policy on the grounds that it discriminates against disabled people. However, the judgement did slam the government for failing to introduce regulations protecting families with disabled children who cannot share a room from the policy, as ordered in a previous case. Rather than passing regulations, the government have relied on council's use of discretionary housing payments to protect these tenants. [http://www.insidehousing.co.uk/legal/disabled-children-bedroom-tax-rules-delayed/6528006.article?
utm_medium=email&utm_source=Ocean+Media+&utm_campaign=2941072_IH-Tenancy-050813-JK&dm_i=1HH2,1R1CG,81190P,68KYG,1](http://www.insidehousing.co.uk/legal/disabled-children-bedroom-tax-rules-delayed/6528006.article?utm_medium=email&utm_source=Ocean+Media+&utm_campaign=2941072_IH-Tenancy-050813-JK&dm_i=1HH2,1R1CG,81190P,68KYG,1)

[http://www.insidehousing.co.uk/legal/disabled-children-bedroom-tax-rules-delayed/6528006.article?
utm_medium=email&utm_source=Ocean+Media+&utm_campaign=2941072_IH-Tenancy-050813-JK&dm_i=1HH2,1R1CG,81190P,68KYG,1](http://www.insidehousing.co.uk/legal/disabled-children-bedroom-tax-rules-delayed/6528006.article?utm_medium=email&utm_source=Ocean+Media+&utm_campaign=2941072_IH-Tenancy-050813-JK&dm_i=1HH2,1R1CG,81190P,68KYG,1)

Tax boost for existing tenants

Inside Housing, 2nd August 2013

Sinn Fein is 'confident' the bedroom tax will not apply to existing tenants in Northern Ireland, a representative has said. Talks on welfare reform are underway in Northern Ireland, with a bill likely to be introduced to the assembly in the autumn. Alex Maskey, a Sinn Fein representative for South Belfast, said an agreement has been reached between Sinn Fein and the Democratic Unionist Party in Northern Ireland and the UK government that existing tenants at least will not be affected by the policy, pending approval from the assembly.

[http://www.insidehousing.co.uk/tenancies/tax-boost-for-existing-tenants/6527993.article?
utm_medium=email&utm_source=Ocean+Media+&utm_campaign=2962314_IH-](http://www.insidehousing.co.uk/tenancies/tax-boost-for-existing-tenants/6527993.article?utm_medium=email&utm_source=Ocean+Media+&utm_campaign=2962314_IH-)

[http://www.insidehousing.co.uk/tenancies/tax-boost-for-existing-tenants/6527993.article?
utm_medium=email&utm_source=Ocean+Media+&utm_campaign=2941072_IH-Tenancy-050813-JK&dm_i=1HH2,1R1CG,81190P,68KYG,1](http://www.insidehousing.co.uk/tenancies/tax-boost-for-existing-tenants/6527993.article?utm_medium=email&utm_source=Ocean+Media+&utm_campaign=2941072_IH-Tenancy-050813-JK&dm_i=1HH2,1R1CG,81190P,68KYG,1)

Consumers urged to fight payday loan firms

Inside Housing, 2nd August 2013

A charity is urging consumers to 'fight back' against 'scandalous' payday loan companies. The Citizens Advice service said three in four borrowers who had got guidance from the charity had been unfairly treated by lenders and could have grounds for an official complaint to the Financial Ombudsman. The charity's analysis of 665 payday loan cases also found one in five were incidents of possible fraud – where people were told to pay back loans they did not take out. It comes amid mounting pressure on payday lenders to change their practices. 14 payday firms have opted to leave the market after the Office of Fair Trading ordered them to comply with the law. 'The level of debt and hardship caused by some payday loans is absolutely scandalous and people often feel completely powerless to do anything about it,' Citizens Advice chief executive Gillian Guy said.

[http://www.insidehousing.co.uk/care/consumers-urged-to-fight-payday-loan-firms/6528040.article?
utm_medium=email&utm_source=Ocean+Media+&utm_campaign=2810097_IH-Care+and+Support-060813-JK&dm_i=1HH2,108A9,81190P,5W701,1](http://www.insidehousing.co.uk/care/consumers-urged-to-fight-payday-loan-firms/6528040.article?utm_medium=email&utm_source=Ocean+Media+&utm_campaign=2810097_IH-Care+and+Support-060813-JK&dm_i=1HH2,108A9,81190P,5W701,1)

3,000 families affected by benefit cap

Inside Housing, 7th August 2013

Nearly 3,000 households have had their incomes slashed as a result of the total benefits cap trialled in four London boroughs, the government has revealed. The government's £26,000-a-year cap on household benefits, including housing benefit, was implemented early in four boroughs from 15 April. The Department for Work and Pensions has published data from the benefit cap trials which took place in Haringey, Enfield, Croydon and Bromley. The data shows in total 2,900 different households had their housing benefit reduced between April and June, including 185 in Bromley, 574 in Croydon, 1,385 in Enfield and 759 in Haringey.

[http://www.insidehousing.co.uk/tenancies/3000-families-affected-by-benefit-cap/6528063.article?
utm_medium=email&utm_source=Ocean+Media+&utm_campaign=2962314_IH-](http://www.insidehousing.co.uk/tenancies/3000-families-affected-by-benefit-cap/6528063.article?utm_medium=email&utm_source=Ocean+Media+&utm_campaign=2962314_IH-)

[Tenancies-120813-JK&dm_i=1HH2,1RHQI,81190P,6ABT7,1](#)

Landlord highlights plight of ex-soldiers

Inside Housing, 8th August 2013

A housing association is highlighting the issues faced by the armed forces trying to get back into civilian life through a series of exhibitions. Town & Country Foundation, the charitable arm of the Tunbridge Wells-based Town & Country Housing Group, has also launched a website to show the difficulties faced by ex-service men. Veterans trying to re-enter civilian life often encounter issues such as homelessness, alcohol and drug dependency, attempted suicide and unemployment, the housing association says. The 'Two Worlds' project is being run as the Ministry of Defence works towards a programme to reduce force levels by 20,000 by 2017.

http://www.insidehousing.co.uk/care/landlord-highlights-plight-of-ex-soldiers/6528102.article?utm_medium=email&utm_source=Ocean+Media+&utm_campaign=2962314_IH-Tenancies-120813-JK&dm_i=1HH2,1RHQI,81190P,6ABT7,1

Major flaws revealed in pay-to-stay policy

Inside Housing, 9th August 2013

The government's pay-to-stay policy will not work in parts of 16 local authority areas across London because tenants will have to earn more than the £60,000 cap to be able to pay affordable rents. Under pay-to-stay proposals outlined last month, social landlords will be able to force tenants who have a household income of more than £60,000 a year to pay full market rent or move into the private rented sector. However, exclusive data from consultancy Hometrack reveals that in four boroughs this will not be possible for tenants paying affordable rents. This is because tenants would need an income of up to £82,226 to pay the rent even if it is set at 63 per cent of the market rate - the average proportion charged under the scheme - rather than the 80 per cent maximum allowed. The research, labelled 'horrifying' by one landlord, also lays bare the extent to which the affordable rent product is unaffordable for many social tenants.

http://www.insidehousing.co.uk/ihstory.aspx?storycode=6528085&CMP=&et_cid=45605&et_rid=5328299&Linkid=revealed%20in%20pay-to-stay%20proposals

FOI reveals effects of bedroom tax in Wales

Inside Housing, 13th August 2013

More than half of Welsh councils received more requests for additional housing payments in the first two months of the bedroom tax than for the same period last year. Figures obtained under the Freedom of Information Act by Plaid Cymru reveal the extent to which households are now applying for discretionary housing payments. DHPs are cash limited short term grants to help people with their housing costs. The research reveals 12 councils out of 22 surveyed saw

the number of DHP applications received in April and May this year outstrip the figures for the same period in 2012/13.

http://www.insidehousing.co.uk/regulation/foi-reveals-effects-of-bedroom-tax-in-wales/6528135.article?utm_medium=email&utm_source=Ocean+Media+&utm_campaign=2967536_IH-Care+and+Support-130813-JK&dm_i=1HH2,1RLRK,81190P,6AR3M,1

More than 40,500 new housing benefit claims in a year

Inside Housing, 14th August 2013

Statistics published by the Department for Work and Pensions revealed that the number of people claiming housing benefit as of May 2013 was 5,072,264. The number claiming the benefit in April was 5,062,172, meaning there were 10,092 new claimants over the period of a month. Year on year, housing benefit claims rose by 40,526, as in May 2012 the number of people claiming was 5,031,738.

A total of £3.39 million of the housing benefit claimed in May 2013 were from people living in the social rented sector, with 1.68 million private sector tenants.

<http://www.insidehousing.co.uk/care/more-than-40500-new-housing-benefit-claims-in-a-year/6528149.article>

Guidance for tenants to report unscrupulous landlords

Inside Housing, 15th August 2013

The Scottish Housing Regulator, which protects the interests of social tenants, said residents needed to be made aware of how they could flag up their landlord's poor service. The body has published an information leaflet providing tenants and tenant groups with information on how to report a landlord who fails to fulfil their legal obligations. The leaflet, Complaints and Significant Performance Failures, sets out how Scottish Public Services Ombudsman and the Scottish Housing Regulator can help in the complaints process.

http://www.insidehousing.co.uk/regulation/guidance-for-tenants-to-report-unscrupulous-landlords/6528156.article?utm_medium=email&utm_source=Ocean+Media+&utm_campaign=2986695_IH-Tenancies-190813-JK&dm_i=1HH2,1S0JR,81190P,6CEHH,1

http://www.insidehousing.co.uk/regulation/guidance-for-tenants-to-report-unscrupulous-landlords/6528156.article?utm_medium=email&utm_source=Ocean+Media+&utm_campaign=2986695_IH-Tenancies-190813-JK&dm_i=1HH2,1S0JR,81190P,6CEHH,1

Bedroom tax safety warning

Inside Housing, 16th August 2013

A Merseyside housing association is advising office staff not to display their uniforms or name badges outside work hours due to fears for their safety from bedroom tax protestors. First Ark, the parent company of Knowsley Housing Trust, which owns around 14,000 homes, issued the warning to nearly 500 staff in an internal newsletter. A number of campaigners have held protests outside the offices of housing associations which they deem to be 'complicit' in the tax due to their

including Halton Housing Trust, Liverpool Mutual Homes and One Vision Housing, have no plans to follow KHT's lead.

http://www.insidehousing.co.uk/care/bedroom-tax-safety-warning/6528165.article?utm_medium=email&utm_source=Ocean+Media+&utm_campaign=2987889_IH-Care+and+Support-200813-JK&dm_i=1HH2,1S1GX,81190P,6CI7S,1

Minister talks 'doublespeak' over unauthorised Gypsy and Traveller sites

The Guardian, 19th August 2013

Communities secretary Eric Pickles' call for councils to tackle the "blight" of unauthorised Traveller sites was met with outcry this month, with community leaders claiming his words fanned the flames of anti-Traveller prejudice. The dire shortage of legal Traveller sites in England is a blight on our society, fuelling social exclusion and appalling health and educational outcomes for Gypsy and Traveller communities. High rates of infant mortality, low life expectancy and high illiteracy are direct results of the cycles of eviction and homelessness that leave many Travellers unable to access basic public services. In a marvellous piece of doublespeak, Pickles recently announced he was revoking the 2005 equality and diversity in planning guidance in order to ensure "fair play" and stop "special treatment" for Travellers. 90% of planning applications submitted by Gypsies and Travellers are rejected, compared with just 20% of applications from the general population.

http://www.theguardian.com/housing-network/2013/aug/19/pickles-doublespeak-unauthorised-traveller-sites?CMP=&et_cid=45605&et_rid=5328299&Link_id=Pickles+is+talking+%27doublespeak%27+over+unauthorised+Gypsy+and+Traveller+sites

Housing association pledges to rehome bedroom tax victims

Inside Housing, 20th August 2013

A housing association has pledged to rehome anyone who goes into arrears and is evicted due to the bedroom tax. Bolton at Home, which owns 18,000 homes, is believed to be the first landlord in the country to make a 'no homelessness' pledge for the bedroom tax. Under the scheme

Bolton at Home will guarantee a move to another home if a tenant falls into arrears solely due to the bedroom tax and if they have 'engaged' with the organisation. The landlord says it will rehome those evicted in its empty properties, or in private sector leasehold properties. John Dunn, assistant director for housing services at Bolton at Home, said those moved will pay affordable rent, or market rent in some cases, and will be on starter tenancies.

http://www.insidehousing.co.uk/regulation/housing-association-pledges-to-rehome-bedroom-tax-victims/6528220.article?utm_medium=email&utm_source=Ocean+Media+&utm_campaign=2987889_IH-Care+and+Support-200813-JK&dm_i=1HH2,1S1GX,81190P,6CI7S,1

Housing associations are failing people with dementia

Inside Housing, 21st August 2013

A survey by Orbit Charitable Trust has revealed only 8 per cent of housing associations surveyed have a dementia strategy in place. The *Small Housing Associations Research*, conducted by the trust, in June and July showed that of 88 respondents, only seven had a dementia strategy in place. OCT chairman David Hucker said it was 'very worrying' that so few housing groups had anything in place to help cope with the growing number of people with the condition. 63 per cent said they did not have a dementia strategy drawn up and 24 per cent of those said they did not need one. 24 per cent said a strategy was being currently being developed.

http://www.insidehousing.co.uk/care/housing-associations-are-failing-people-with-dementia/6528237.article?utm_medium=email&utm_source=Ocean+Media+&utm_campaign=3010407_IH-Care+and+Support-270813-JK&dm_i=1HH2,1SIUF,81190P,6EGEA,1

Repetitive prison sentences disrupt the housing economy

Inside Housing, 22nd August 2013

A report has called for the end of repetitive prison sentences, labelling them 'costly, wasteful and unaccountable' and said they lead to 'consequent housing instability'. It said the housing economy is also disrupted because of this. The study on the 'bleak' prospects women from ethnic minorities face when trying to get housed after leaving prison looked at prison leavers from Holloway Prison. The study found the most frequent outcomes for women upon their release were homeless person's services, temporary

housing or staying with friends. The number of women in temporary housing after leaving prison was higher than in their previous situation, analysis for homelessness charity St Mungo's found.

http://www.insidehousing.co.uk/care/repetitive-prison-sentences-disrupt-the-housing-economy/6528248.article?utm_medium=email&utm_source=Ocean+Media+&utm_campaign=3010407_IH-Care+and+Support-270813-JK&dm_i=1HH2,1SIUF,81190P,6EGEA,1

Cut back on fags and booze to get DHPs, council says

Inside Housing, 23rd August 2013

Edinburgh Council is denying emergency hardship payments to tenants affected by the bedroom tax if they spend too much on non-essential items such as cigarettes and alcohol. The council is advising tenants to first cut back on 'luxuries' such as television and phone packages and cigarettes and alcohol and use the money to cover their benefit shortfall rather than awarding them a discretionary housing payment. Cammy Day, vice-convenor of the health, well-being and housing committee at Edinburgh Council, said 'As a result of a policy imposed by the Conservative Party we are having to do this, otherwise our entire DHP allocation would have been spent in the first three months'.

http://www.insidehousing.co.uk/regulation/cut-back-on-fags-and-booze-to-get-dhps-council-says/6528266.article?utm_medium=email&utm_source=Ocean+Media+&utm_campaign=3010407_IH-Care+and+Support-270813-JK&dm_i=1HH2,1SIUF,81190P,6EGEA,1



National Housing Diversity Network Accreditation (DNA)

We all want to improve our customers lives, through genuine partnerships, by delivering excellence. HDN have developed a forward thinking and outcome based accreditation model, preparing you for significant change and future success.

**Contact us now to find out
more about DNA.**

www.housingdiversitynetwork.co.uk

01484 652 606

info@housingdiversitynetwork.co.uk

Quick Links

PUBLICATIONS

[Housing with Care for Older People](#)

[Councils use zero hours contracts for vulnerable](#)

[The Local Impacts of Welfare Reform](#)

[Economic Tracker](#)

[Turning the Tide](#)

[Severe Weather Responses; Summary of winter provision for people sleeping rough 2012](#)
-13

Publications

Nearly a quarter of people in their early 50s are worried about becoming homeless, according to research commissioned by charity Age UK.
Age UK, Summer 2013

Housing with Care for Older People

Chartered Institute for Housing, August 2013

Cuts to capital spending have made it impossible to build new supported housing developments in parts of Scotland, the Chartered Institute of Housing has warned. A report published by the Institute states that social landlords predicted that any extra housing with care support would mean the alteration of existing stock because there is not enough money to construct new developments. 'There is widespread perception that, unless capital funding constraints in the public and private sector are addressed, any further expansion of housing with care will be very limited,' the report warned.

http://www.cih.org/resources/PDF/Scotland%20Policy%20Pdfs/Older%20People/CIH_HousingandCareforOlderPeople_v2eup_dated.pdf

Councils use zero hours contracts for vulnerable

Unison, August 2013

Ninety-seven per cent of all councils are using contracts which do not guarantee care providers work leading to poorer services for the vulnerable, according to research carried out by union Unison. Councils are commissioning care with large numbers of contractors on their books but do not guarantee them specific hours from one week to the next, the union said, which is fuelling the use of zero hours contracts for homecare workers. Unison claims this means insecurity and low pay in the sector and is causing high staff turnover, which is leading to worse services for the elderly and vulnerable. The union is calling on councils to adopt basic terms and conditions for

them to abide by when they commission homecare services and commission care.

<http://www.unison.org.uk/news/rise-in-zero-hours-contracts-shame-councils-and-hit-elderly-and-vulnerable>

The Local Impacts of Welfare Reform

Local Government Association, August 2013

Households claiming benefit will be £1,615 a year worse off in 2015/16 as a result of the coalition government's welfare reforms, a report has found. The study, carried out by the Centre for Economic and Social Inclusion and commissioned by the Local Government Association, illustrates the cumulative impact of welfare reform. The government's reforms include an overall household benefits cap of £26,000, the bedroom tax on tenants deemed to be under-occupying their homes, local housing allowance caps and caps to increase in benefits. The CESI study found 60 per cent of all welfare reform reductions fall on households where somebody works.

<http://www.cesi.org.uk/sites/default/files/publications/The%20local%20impacts%20of%20welfare%20reform%20version%207.pdf>

Economic Tracker

Age UK, Summer 2013

Nearly a quarter of people in their early 50s are worried about becoming homeless, according to research commissioned by charity Age UK. A poll of 971 people, conducted by Ipsos Mori in March this year for the charity, found around 240 people did not believe they would be able to keep up with their mortgage or rent payments. It also discovered 46 per cent of people aged between 50 and 64 have been out of work for more than a year with reducing prospects of finding a job. Age UK says research has proved it is harder for someone aged 50 to get back into the work place than for any other age group, and is more likely to be made redundant than workers aged between 29 and 49.

<http://www.ageuk.org.uk/Documents/EN-GB/For-professionals/Research/Economic%20Monitor%20Report%20Summer%202013.pdf?dtrk=true>

Turning the Tide

Centre for Social Justice, August 2013

Five coastal towns in England and Wales are stuck in a cycle of poverty, the think tank Centre for Social Justice has warned. The group, set up by Iain Duncan Smith, said the towns are becoming 'dumping grounds' for a selection of vulnerable people including ex-offenders and children in care and this was 'depressing the desirability' of the areas creating a poverty cycle. The report, *Turning The Tide*, examined Rhyl, Margate, Clacton-on-Sea, Blackpool and Great Yarmouth and found a pattern of 'poverty attracting poverty'. Across the five towns, there are high levels of houses in multiple occupation as, with less demand for hotels and guesthouses, a large share of accommodation has been bought up by private landlords and converted into HMOs. The report found this has attracted people living on low incomes and reliant on welfare.

http://www.insidehousing.co.uk/care/coastal-towns-suffering-%E2%80%98severe-social-breakdown%E2%80%99/6528029.article?utm_medium=email&utm_source=Ocean+Media+&utm_campaign=2810097_IH-Care+and+Support-060813-JK&dm_i=1HH2,108A9,81190P,5W7O1,1

Severe Weather Responses; Summary of winter provision for people sleeping rough 2012-13

Homeless Link, August 2013

Life-saving emergency shelter provision for rough sleepers over the winter months is threatened by welfare reform, warns umbrella-group Homeless Link. The body, which represents 500 homelessness services, is calling on councils and homelessness organisations to start planning for winter provision now to minimise the effect a drop in funding might have. It also wants the government to clarify whether winter shelters will still be able to receive funding through universal credit, as they have done with housing benefit in the past. A report released by Homeless Link showed in a survey of 126 services that 4,863 people used the shelters in the long winter of 2012/13. A quarter of these had not approached a service for help before, it discovered, and 10 per cent were destitute people from abroad who were not entitled to benefits.

<http://homeless.org.uk/sites/default/files/site-downloads/Severe%20Weather%20Responses%202012-13.pdf>



Practitioner Group Updates

If you or any of your colleagues are interested in joining any of the groups, please contact carla@housingdiversitynetwork.co.uk. As a practitioner you are welcome to attend any of the meetings and be added to all 5 email groups.

Dates for the next meetings are:

North West Equality & Diversity Network for Housing Practitioners

The next Network Group meeting will be held on **11th December 2013** at New Charter Housing Trust, Ashton-under-Lyne

Yorkshire and East Midlands Diversity Discussion Forum

The next meeting will be held on the **17th October 2013**, venue to be confirmed.

North East Equality & Diversity Network for Housing Practitioners

The next meeting will be held on the **24th October 2013** at Bernicia Group, Newcastle Upon Tyne

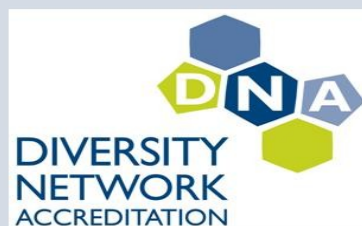
South & South West Equality & Diversity Forum

The next Forum meeting will be held on the **23rd October 2013** at Homes in Sedgemoor, Somerset

Midlands Equalities Forum

The next meeting will be held on **03rd December 2013** at Solihull Community Housing, Solihull

... access to work supporting vulnerable people ... welfare reform ... customer profiling ... worklessness ... engaging with hard to reach customers ...



National Housing Diversity Network Accreditation (DNA)

We all want to improve our customers lives, through genuine partnerships, by delivering excellence. HDN have developed a forward thinking and outcome based accreditation model, preparing you for significant change and future success.

Contact us now to find out more about DNA.

www.housingdiversitynetwork.co.uk

0870 143 2732 dna@housingdiversitynetwork.co.uk



Upcoming Events

- **Board Mentoring Workshop - Finance and VFM**
28th September 2013, Watford
- **HDN & CIH Annual Equality and Diversity Conference**
2nd October 2013, London
- **'Unconscious Bias' Training**
17th October 2013, King's House Conference Centre, Manchester
- **Board Mentoring Workshop - Business Case for Diversity**
9th November 2013, Watford

For further information on the above events please contact carla@housingdiversitynetwork.co.uk .



The Housing Diversity Network's Equality & Diversity Briefings are produced in association with the Centre for Local Economic Strategies (CLES). For further information on CLES please visit their website at www.cles.org.uk, contact Matthew Jackson on 0161 233 1928 or email

Matthewjackson@cles.org.uk