



Message from the Chief Executive.

Supporting the UN's overview on UK Disability Convention Compliance

HDN has recently reached agreement with the EHRC to bring to the attention of its regional E&D Practitioner Networks a one-off opportunity to help the UN Committee on the Rights of Persons with Disabilities monitor the extent to which we are judged to be complying with our obligations under the UN Disability Convention.

The UN Committee will form their judgement after reviewing evidence from disabled people and organisations across the UK along with evidence submitted to it by the EHRC. A special participation questionnaire has been put together that we have asked practitioner group colleagues to liaise with their disabled tenants and return either to the EHRC directly or to HDN. Although the EHRC ideally wanted initial responses by 10 November, they are happy to receive completed questionnaires that come in after that date.

If you wish to access the participation questionnaire, please click on the link below but do please remember that it is crucial that you involve your disabled tenants and staff in its completion. If you do choose to return the questionnaire to us please email it to info@housingdiversitynetwork.co.uk as soon as you are able to.

<http://www.equalityhumanrights.com/human-rights/our-human-rights-work/international-framework/un-convention-on-the-rights-of-persons-with-disabilities/the-un-disability-convention-participation-questionnaire/>

New Immigration Bill

The Government recently published proposals for a new Immigration Bill that promises significant changes in how it will aim to tackle illegal immigration. One of the measures will require private landlords to check the immigration status of their tenants and prospective tenants, to prevent those with no right to live in the UK from accessing private rented housing. There are a host of other proposals that our members should be aware of particularly as, if the proposals do eventually become law, they are likely to have an impact on the customer base of social housing providers. To reflect the importance of these proposals a special briefing is available for HDN members to access by emailing info@housingdiversitynetwork.co.uk and requesting a copy.

this issue

Latest From the Network **P.1**

Equality & Diversity News **P.3**

Publications **P.6**

Practitioner Groups **P.9**

Upcoming Events **P.9**

Quick Links

PRACTITIONER GROUPS

[North West Equality & Diversity Network for Housing Practitioners](#)

[Yorkshire and East Midlands Diversity Discussion Forum](#)

[North East Equality & Diversity Network](#)

[South & South West Equality & Diversity Forum](#)

[Midlands Equalities Forum](#)

The Social Mobility and Child Poverty Commission “State of the Nation Report”

The Commission published its first annual report in October 2013 and outlines its findings on a number of issues:-

- Child poverty
- Employment
- Public spending
- Childcare
- Schools
- Making the transition to work
- Welfare reform
- Universities
- Professions

This is another issue that we feel will have a significant impact on the client base of our members and again a special briefing can be obtained on request by emailing info@housingdiversitynetwork.co.uk

Moving equality back up the agenda

Whilst HDN is strictly neutral in terms of party politics, we are happy to forge links with different parties as part of our overall mission to push for the equalities agenda to have a higher profile across the housing and other sectors. We have opened a dialogue with members of the Shadow Cabinet as we are interested in hearing more about what they will do on equality issues should they form the next Government in 2015. As part of this dialogue, the Shadow Cabinet recently forwarded the link below highlighting the Party’s review into race which we think members will find of interest.

<http://www.yourbritain.org.uk/agenda-2015/policy-review/policy-review/realising-one-nation-developing-new-race-equality-strategy>

A recent review by Labour into ‘Making Rights a Reality for Disabled People’ also reported recently. The report sets out a summary of the ideas generated through the consultation that has been undertaken and is well worth reading.

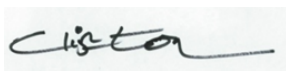
<http://liambyrne.co.uk/wp-content/uploads/1-Making-Rights-a-Reality-Consultation.pdf>

We would be interested in the views of members on these reports and consultations so please get in touch and we will gladly pass on your thoughts and views.

A very warm welcome to the new members of HDN that have joined us over the past few months – Aksa Homes, Bolton at Home, Broxbourne & East Herts CVS, Innisfree, Sadeh Lok, Shropshire Housing, Suffolk Housing and Tower Hamlets Homes.

Also, congratulations to the following organisations who have recently achieved Diversity Network Accreditation – London Borough of Southwark and Housing for Women. Well done on a great achievement.

Best wishes



Clifton Robinson, Chief Executive HDN

For further information on any of the above, please email me at Clifton@housingdiversitynetwork.co.uk

To follow the view of the HDN Chair, please visit the Chair’s Blog on www.housingdiversitynetwork.co.uk

Quick Links

E & D NEWS

[Rent arrears up £2.2m six months after bedroom tax introduced](#)

[The bedroom tax is a 'cruel failure', says NHF chief](#)

[Future of work programme should include 'more involvement' for social landlords, says Lord Freud](#)

[Fund launched for people in debt after benefit reforms](#)

[Merger for 'complementary' charities dealing with offenders](#)

[Benefits cap to leave families 'destitute', court hears](#)

[Disabled woman wins bedroom tax appeal](#)

[More benefit sanctions means more suffering for those who live on the edge](#)

['Go Home' campaign banned in its current form by ASA](#)

Equality & Diversity News.

The Advertising Standards Agency has banned the Home Office 'Go Home' poster in its current form after two of the complaints against the campaign were upheld and three were not.

Inside Housing, 9th October 2013

Rent arrears up £2.2m six months after bedroom tax introduced

Inside Housing, 1st October 2013

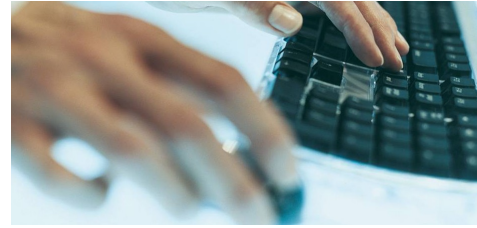
Rent arrears in Merseyside have spiralled six months after the introduction of the government's controversial bedroom tax, a survey of social landlords has found. Twelve Merseyside housing associations have released figures showing a £2.2 million increase in arrears compared to the corresponding period last year. The data also shows empty properties have increased by 29 per cent to 1,956 and the average time it takes to re-let an empty property has jumped from 28 to 38 days – resulting in a loss of rent to landlords of £616,662 per month.

http://www.insidehousing.co.uk/regulation/rent-arrears-up-%C2%A322m-six-months-after-bedroom-tax-introduced/6528824.article?utm_medium=email&utm_source=Ocean+Media+&utm_campaign=3168377_IH-Tenancies-071013-JK&dm_i=1HH2,1VWQH,81190P,6RHBV,1

The bedroom tax is a 'cruel failure', says NHF chief

Inside Housing, 1st October 2013

The chief executive of the National Housing Federation has said the bedroom tax is a 'cruel failure' on the six-month anniversary of its implementation. The penalty was launched on 1 April, but David Orr said that the government must 'repeal' it. 'Six months on from the launch of the bedroom tax, there can be no doubt that it has been a cruel failure,' he said. 'We've seen half of families hit pushed into rent arrears. Disabled people say they will be forced to cut back on food and bills. Even the wider



public can see the gross injustice of this policy, with six in ten people calling for it to be scrapped.

http://www.insidehousing.co.uk/regulation/the-bedroom-tax-is-a-%E2%80%98cruel-failure%E2%80%99-says-nhf-chief/6528833.article?utm_medium=email&utm_source=Ocean+Media+&utm_campaign=3144055_IH-care-011013-CK&dm_i=1HH2,1VDYV,81190P,6PIJS,1

Future of work programme should include 'more involvement' for social landlords, says Lord Freud

Inside Housing, 1st October 2013

Welfare minister Lord David Freud has hinted the government will answer pleas by social landlords for its flagship employment scheme to be overhauled so more housing providers can use it. Speaking at a fringe event at the Conservative Party conference, Steve Howlett, chief executive of Peabody, said the organisation had helped 320 people into work in the past year but could do much more if the work programme were less bureaucratic. Speaking at the conference Lord Freud echoed this remark saying, 'Some of the better performers [in the work programme] are closely associated with housing associations. In future rounds of the work programme I would not be surprised to see more involvement of housing associations.'

http://www.insidehousing.co.uk/regulation/future-of-work-programme-should-include-more-involvement-for-social-landlords-says-lord-freud/6528830.article?utm_medium=email&utm_source=Ocean+Media+&utm_campaign=3144055_IH-care-011013-CK&dm_i=1HH2,1VDYV,81190P,6PIJS,1

http://www.insidehousing.co.uk/regulation/future-of-work-programme-should-include-more-involvement-for-social-landlords-says-lord-freud/6528830.article?utm_medium=email&utm_source=Ocean+Media+&utm_campaign=3144055_IH-care-011013-CK&dm_i=1HH2,1VDYV,81190P,6PIJS,1

Fund launched for people in debt after benefit reforms

Inside Housing, 1st October 2013

A new fund to help people who are in debt or affected by welfare reforms has been launched in Scotland. Seventy projects, including Shelter Scotland and the Child Poverty Action Group, will receive grants from the £7.45m scheme by the Scottish legal aid board - a non-departmental body responsible to the Scottish

[Immigration checks will exclude ethnic minorities from renting](#)

[Social landlord gives residents food bank vouchers as poverty increases](#)

[EU report 'misleading' and 'one-sided', says homelessness charity](#)

[51% of Welsh housing association tenants pushed into arrears due to bedroom tax](#)

Government. The Scottish Government is also partnering with the Money Advice Service to fund 126 additional advisors who will be employed by the new projects.

http://www.insidehousing.co.uk/regulation/fund-launched-for-people-in-debt-after-benefit-reforms/6528829.article?utm_medium=email&utm_source=Ocean+Media+&utm_campaign=3144055_IH-care-011013-CK&dm_i=1HH2,1VDYV,81190P,6PIJS,1

Merger for 'complementary' charities dealing with offenders

Inside Housing, 4th October 2013

A charity that rehouses ex-offenders has merged with another organisation that works with prisoners to address their offending behaviour. Langley House Trust, which operates 60 sites including hostels and houses across 20 local authority areas, merged with Kainos Community. A statement released about the merger said: 'Both organisations see this as an excellent opportunity to extend their impact and see more men and women live successful, crime-free lives.

<http://www.insidehousing.co.uk/care/merger-for-complimentary-charities-dealing-with-offenders/6528909.article>

Benefits cap to leave families 'destitute', court hears

Inside Housing, 4th October 2013

Lone mothers and their children face 'destitution' as a result of the £500-a-week household benefits cap, the High Court has heard. Two judges are being asked to rule that capping regulations introduced by work and pensions secretary Iain Duncan Smith are unlawful and breach the human rights of out-of-work women struggling to bring up families on their own. The challenge is being brought by three families from Hackney, Haringey, and Hammersmith & Fulham, two of which have fled domestic violence.

http://www.insidehousing.co.uk/legal/benefits-cap-to-leave-families-%E2%80%99destitute%E2%80%99-court-hears/6528881.article?utm_medium=email&utm_source=Ocean+Media+&utm_campaign=3171504_IH-Care+and+Support-081013-JK&dm_i=1HH2,1VZ5C,81190P,6RQLI,1

Disabled woman wins bedroom tax appeal

Inside Housing, 4th October 2013

Couples who cannot share a bedroom because of one partner's disability have been given fresh hope of being able to escape the bedroom tax as a result of the first successful human rights challenge to the penalty. A woman with multiple sclerosis has won an appeal against Glasgow Council's decision to deduct housing benefit for the

'spare' bedroom used by her husband. A spokesperson for disability charity Scope said: 'The Glasgow case could be really important. It's likely that many families have similar living arrangements.'

http://www.insidehousing.co.uk/legal/disabled-woman-wins-bedroom-tax-appeal/6528880.article?utm_medium=email&utm_source=Ocean+Media+&utm_campaign=3171504_IH-Care+and+Support-081013-JK&dm_i=1HH2,1VZ5C,81190P,6RQLI,1

More benefit sanctions means more suffering for those who live on the edge

The Guardian, 7th October 2013

According to a Guardian survey, 31% of homeless people claiming jobseeker's allowance had been the subject of sanctions compared with a national average of just 3%. The challenges that many homeless people face are simply not suited to the current one-size-fits-all system. Of the survey respondents, one-third reported that clients with mental health problems were sanctioned and nearly half reported that clients with substance misuse issues were also penalised. The inflexibility of sanctions is allowing such individuals to slip through the net to the margins of society where their problems are likely to worsen.

http://www.theguardian.com/housing-network/2013/oct/07/benefit-sanctions-suffering-society-edge?CMP=&et_cid=51838&et_rid=5328299&Linkid=striker+benefit+sanctions+will+have+on+vulnerable+groups

'Go Home' campaign banned in its current form by ASA

Inside Housing, 9th October 2013

The Advertising Standards Agency has banned the Home Office 'Go Home' poster in its current form after two of the complaints against the campaign were upheld and three were not. The ASA ruled in the adjudication that the claim on the poster, piloted between 22 to 28 July on the side of vans driven through six London boroughs, that '106 arrests last week in your area' was misleading. The judgement said: 'Because the data on which the claim was based related to a significant part of London north of the Thames rather than to the specific areas in which the poster was displayed, and because the data did not relate to the week prior to the campaign,

we concluded the claim was misleading and had not been substantiated.'

http://www.insidehousing.co.uk/care/%E2%80%98go-home%E2%80%99-campaign-banned-in-its-current-form-by-asa/6528951.article?utm_medium=email&utm_source=Ocean+Media+&utm_campaign=3201834_IH-Care+and+Support-151013-JK&dm_i=1HH2,1WMJU,81190P,6U65U,1

Immigration checks will exclude ethnic minorities from renting

The Guardian, 16th October 2013

Some months ago the government floated plans to make private landlords accountable for checking the immigration status of tenants. According to the government, "Private landlords will be required to make simple checks on new tenants to ensure that they are entitled to be in this country". The proposed plans have caused alarm among housing providers who risk being penalised for mistakenly renting a property to someone with the right to rent. Consequently, it is likely that landlords will avoid renting to people from ethnic minorities in the fear that they may not be legally allowed to rent.

<http://www.theguardian.com/housing-network/2013/oct/16/immigration-checks-landlords-ethnic-minorities>

Social landlord gives residents food bank vouchers as poverty increases

The Guardian, 21st October 2013

A London housing association is stepping in to support food banks after seeing residents struggle to buy food. The Peabody housing provider has contacted food banks in each of the 28 London boroughs where it has homes and has been approved to issue food bank vouchers directly to all its residents in need. The housing provider is encouraging its employees to donate non-perishable food items to local food banks and it is encouraging residents to try growing their own fruit and vegetables.

<http://www.theguardian.com/housing-network/2013/oct/21/food-banks-housing-poverty-peabody>

EU report 'misleading' and 'one-sided', says homelessness charity

Inside Housing, 21st October 2013

A Scottish homelessness charity has condemned a European Union report into the UK's housing as 'misleading and one-sided'. The criticism came after delegates at an SNP conference called on Labour, Liberal Democrat and Conservative councils to follow them in enacting a 'no evictions' policy for tenants hit by the bedroom tax. Homeless Action Scotland criticised a report by the EU's Social Protection Committee, which it said had failed to tackle the impact of the government's welfare reforms. Robert Aldridge, Homeless Action Scotland's chief executive, said the report gave a 'distorted' view of the government's actions and had 'no bearing whatsoever' on any policies to reduce homelessness.

http://www.insidehousing.co.uk/care/eu-report-misleading-and-one-sided-says-homelessness-charity/6529114.article?utm_medium=email&utm_source=Ocean+Media+&utm_campaign=3230874_IH-Care+and+Support-221013-JK&dm_i=1HH2,1X8YI,81190P,6WKVR,1

http://www.insidehousing.co.uk/care/51-of-welsh-housing-association-tenants-pushed-into-arrears-due-to-bedroom-tax/6529184.article?utm_medium=email&utm_source=Ocean+Media+&utm_campaign=3247746_IH-Tenancies-281013-JK&dm_i=1HH2,1XLZ6,81190P,6XZQT,1

51% of Welsh housing association tenants pushed into arrears due to bedroom tax

Inside Housing, 24th October 2013

The majority of tenants in Wales affected by the bedroom tax in 22 housing associations have been pushed into arrears, an MP's research has shown. Jessica Morden, MP for Newport East, surveyed social landlords across Wales and discovered 51 per cent of tenants not previously in arrears have failed to keep up with their rent since being hit by the bedroom tax. This amounts to a total of £755,779 of arrears across the 22 associations surveyed. Ms Morden said: 'These figures make for horrifying reading, and show that the Bedroom Tax is forcing people into a spiral of debt and arrears.'

http://www.insidehousing.co.uk/care/51-of-welsh-housing-association-tenants-pushed-into-arrears-due-to-bedroom-tax/6529184.article?utm_medium=email&utm_source=Ocean+Media+&utm_campaign=3247746_IH-Tenancies-281013-JK&dm_i=1HH2,1XLZ6,81190P,6XZQT,1

http://www.insidehousing.co.uk/care/51-of-welsh-housing-association-tenants-pushed-into-arrears-due-to-bedroom-tax/6529184.article?utm_medium=email&utm_source=Ocean+Media+&utm_campaign=3247746_IH-Tenancies-281013-JK&dm_i=1HH2,1XLZ6,81190P,6XZQT,1

Quick Links

PUBLICATIONS

[Tuberculosis in Vulnerable Groups](#)

[Ending 15-Minute Care](#)

[Home Economics](#)

[The Impact of Welfare Reform on Northern Ireland](#)

[Four out of five use payday loans for food](#)

[Time to Act](#)

[London's Poverty Profile](#)

[Under-occupation Penalty Report](#)

[The 'Bedroom Tax' in Scotland](#)

[Planning Out Poverty](#)

[Controlling Immigration – Regulating Migrant Access to Health Services in the UK – Results of the public consultation](#)

[Close to Home: Recommendations Review](#)

Publications

The planning system has 'lost its way' and should be refocused to combat social exclusion and poverty, a leading planning charity has said.

The Town and Country Planning Association, October 2013

Tuberculosis in Vulnerable Groups

The National Institute for Health and Care Excellence, September 2013

A briefing released for local authorities has recommended that they provide accommodation for homeless people who are undergoing treatment for tuberculosis to help stop the disease spreading.

The National Institute for Health and Care Excellence briefing *Tuberculosis in Vulnerable Groups*, endorsed by Public Health England, recommends that local authorities provide accommodation for homeless people who are undergoing treatment for tuberculosis to help stop the disease spreading. The report proposes a 'whole system approach' meaning the NHS, local authorities and Public Health England should work together to ensure services reflect the needs of their area.

<http://publications.nice.org.uk/tuberculosis-in-vulnerable-groups-lgb11>

Ending 15-Minute Care

Leonard Cheshire Disability, October 2013

The disability charity, Leonard Cheshire Disability has released a report, *Ending 15-minute Care* which claims that some English local authorities deliver more than three quarters of their care visits in 15 minutes or less. The report states that 60 per cent of local authorities are commissioning 15-minute care visits where patients are having to choose whether they go to the toilet or get a drink. The research, based on freedom of information requests to all of England's councils, a Comres poll and a number of interviews and surveys undertaken with care workers, disabled and

older people in receipt of 15-minute care visits, found the proportion of visits which lasted only 15 minutes has risen by 15 per cent over the past five years.

<http://www.lcdisability.org/download.php?id=2771>

Home Economics

Family Action and Lloyds Banking Group's Money for Life Programme, October 2013

The report, *Home Economics* reveals that some of the UK's most vulnerable families are struggling to afford essential items such as fridges and beds due to a 'poverty penalty'. *Home Economics*, by national charity Family Action and Lloyds Banking Group's money for life programme, says that low income families often have no other ways to afford household basics than rent-to-buy where prices are massively inflated. Based on analysis of a Yougov poll, the report suggests low-income families are suffering from a 'poverty penalty' that forces them to pay more for essential goods and other services. They are more than twice as likely to buy goods from a rent-to-own shop due to them having poor credit ratings.

http://www.family-action.org.uk/uploads/documents/Family%20Fortunes_Home%20Economics.pdf

The Impact of Welfare Reform on Northern Ireland

Centre for Regional Economic and Social Research, October 2013

Northern Ireland will be hit harder by welfare reform than any other part of the UK, new research has said. According to a report by the Centre for Regional Economic and Social Research at Sheffield Hallam University, the reforms, which are yet to be introduced in the country, will take £750 million a year out of the economy. This is equivalent to £650 a year per adult of working age, compared to £470 for Great Britain. Northern Ireland is expected to lose £230 million per year from incapacity benefits, while changes to tax credits, the one per cent up-rating of most working-age benefits and reforms to disability living allowance will all cost more than £100 million annually. Professor Steve Fothergill, co-author of the report, said: 'Northern Ireland has not been singled out as the target for welfare reform. But the local statistics are alarming.

<http://www.shu.ac.uk/research/cresr/sites/shu.ac.uk/files/impact-welfare-reform-ni.pdf>

Four out of five use payday loans for food

Christians Against Poverty, October 2013

A debt charity is calling for tighter regulations to protect vulnerable people from payday lenders after publishing findings from a survey of its clients. Christians Against Poverty found four out of five, 78 per cent, of service users who took part in the survey took out payday loans to afford food. Fifty-two per cent took out a loan for electricity/gas bills, 36 per cent took out a loan for rent / mortgage and 27 per cent took out a loan for the cost of Christmas. It also found one in five people weren't asked if they had a job. Matt Barlow, chief executive of the charity, said: 'This evidence shows that people taking out payday loans are not, typically, doing cosy house repairs as most payday lenders would have us believe.' <https://capuk.org/downloads/press/paydaylendingPDF.pdf>

Time to Act

Tower Hamlets Fairness Commission, October 2013

A report by the Tower Hamlets Fairness Commission sets out 16 recommendations for tackling poverty and inequality in an east London borough. The report, *Time to Act* provides several housing-related recommendations related to restrictions on local authority borrowing to build social housing, new models for long-term investment in social housing, rent models being based on the income of tenants, the negative impact of investment in the London property market, and implementing a landlord registry scheme for Tower Hamlets. <http://www.towerhamlets.gov.uk/idoc.ashx?docid=60ace821-c9ef-4577-ae1f-be114fc02a42&version=-1>

London's Poverty Profile

The New Policy Institute and Trust for London, October 2013

The number of people living in poverty in London's social housing has decreased by 340,000 over the last 10 years, a new report has revealed. However, this compares to a 460,000 rise in people living in poverty in the private rented sector, which now houses the majority of those in poverty in the capital. The report, *London's Poverty Profile* shows that at the start of the 2000s over half of those in poverty in London, around a million people, lived in the social rented sector. Now, 830,000 are found in the PRS compared to 700,000 in the social rented sector and 610,000 in owner-occupation which means poverty should no longer be seen as confined to social housing. http://www.londonpovertyprofile.org.uk/LPP_2013_Report_Web.pdf

Under-occupation Penalty Report

Centre for Housing Policy, October 2013

University and social landlord collaborative research has found the Department of Work and Pensions may have significantly over-estimated the savings from the bedroom tax. The University of York worked with Riverside, Wigan and Leigh Housing, Affinity Sutton and Gentoo to apply figures based on the experience of the housing associations tenants to a model used by the DWP to estimate the savings reported to parliament in impact assessments in 2011 and 2012. DWP estimated that the introduction of bedroom tax would reduce the housing benefit bill by £930 million over the next two years, with further tests showing annual savings within a range of £10 million either side of its main estimate. However, the new research suggests that using the DWP's own model, the actual savings may be little more than 60 per cent of the projected figure.

<https://www.york.ac.uk/media/chp/documents/2013/Testing%20DWP%20Assessment%20of%20Impact%20of%20SRS%20Size%20Criterion%20on%20HB%20Costs%20University%20of%20York.pdf>

The 'Bedroom Tax' in Scotland

Centre for Public Policy, October 2013

An examination of the bedroom tax in Scotland has found that the 'pull factors' keeping people in their current homes and communities outweighed the 'push driver' of the charge. Kenneth Gibb, University of Glasgow housing economics professor and director of the Centre for Public Policy, conducted an in depth report *The 'Bedroom Tax' in Scotland*. The report outlines how tenants are choosing to respond to it by 'paying it, by seeking DHP support, by trying to get off benefits and by terminating their tenancies and looking to other housing providers and solutions' rather than downsizing. Speaking to officers from seven housing organisations, Mr Gibb found 'there is little demand to downsize' even when there are one-bedroom properties available. http://www.scottish.parliament.uk/S4_Welfare_Reform_Committee/Reports/wrr-13-05w.pdf

Planning Out Poverty

The Town and Country Planning Association, October 2013

The planning system has 'lost its way' and should be refocused to combat social exclusion and poverty, a leading planning charity has said. Launching a report in Parliament, the Town and Country Planning Association has called for a 'profound reconsideration of the social purpose of planning'. The report, *Planning Out Poverty*, makes 12 key recommendations, including altering the National Planning Policy Framework to make poverty

reduction a key aspect. Kate Henderson, co-author and TCPA chief executive said: 'We need a profound reconsideration of the social purpose of planning. This reconsideration must be framed by the undoubted capacity of planning decisions to impact on social exclusion, for better or worse.'

http://www.tcpa.org.uk/data/files/Planning_out_Poverty.pdf

Controlling Immigration – Regulating Migrant Access to Health Services in the UK – Results of the public consultation

UK Border Agency, October 2013

On 3 July 2013, the Home Office and the Department of Health launched parallel consultations on access to free health care for migrants. The consultation proposed:

- Stopping those visiting for less than six months from getting free access to GP surgeries by introducing charging, as currently used in hospitals; and
- A new registration and tracking system for chargeable visitors before they first join a GP surgery – possibly linked to the NHS number, alongside better checks to enforce charges for care in both hospitals and sustainable primary care.

Responding to publication, Leigh Daynes, Executive Director of Doctors of the World UK said: 'Discriminating between patients goes against medical ethics and violates the Oath doctors take.'

Maurice Wren, Chief Executive of the Refugee Council, said: 'These proposals will affect our most vulnerable clients, refused asylum seekers who are often destitute, unable or too scared to return to their home countries.'

https://www.gov.uk/government/uploads/system/uploads/attachment_data/file/256352/

[Health Consultation Response For Publication.pdf](#)

Close to Home: Recommendations Review

The Equality and Human Rights Commission, October 2013

On 8 October 2013, the Equality and Human Rights Commission (EHRC) published a report reviewing the 25 recommendations the Commission made in its 2011 formal inquiry into older people and human rights in home care. According to the review, local authorities should change how they commission home care, and in particular ensure that workers are paid the minimum wage. The report warns that the way care is currently commissioned is unsustainable, leading to inadequate pay, poor working conditions for care workers and increasing threats to older people's human rights. 'Close to Home: An Inquiry into older people and human rights in home care' was published by the EHRC in November 2011. It contained disturbing evidence that the poor treatment of many older people is breaching their human rights

http://www.equalityhumanrights.com/uploaded_files/close_to_home_recommendations_review_web.pdf



National Housing Diversity Network Accreditation (DNA)

We all want to improve our customers lives, through genuine partnerships, by delivering excellence. HDN have developed a forward thinking and outcome based accreditation model, preparing you for significant change and future success.

Contact us now to find out more about DNA.

www.housingdiversitynetwork.co.uk

01484 652 606

info@housingdiversitynetwork.co.uk



Practitioner Group Updates

If you or any of your colleagues are interested in joining any of the groups, please contact carla@housingdiversitynetwork.co.uk. As a practitioner you are welcome to attend any of the meetings and be added to all 5 email groups.

Dates for the next meetings are:

North West Equality & Diversity Network for Housing Practitioners

The next Network Group meeting will be held on the **11th December 2013** at New Charter Housing Trust, Ashton-under-Lyne.

Yorkshire and East Midlands Diversity Discussion Forum

The next meeting will be held on the **23rd January 2014** at Incommunities, Bradford.

North East Equality & Diversity Network for Housing Practitioners

The next meeting is still to be confirmed.

South & South West Equality & Diversity Forum

The next Forum meeting will be held on the **10th December 2013** at Southwark Council, London.

Midlands Equalities Forum

The next meeting will be held on **3rd December 2013** at Solihull Community Housing, Solihull.

Upcoming Events

- [**HDN Workshop with Aksa Homes - The Business Case for Diversity: Good Governance**](#)
26th November 2013, Manchester
- [**Board Mentoring Workshop - Business Case for Diversity**](#)
2nd December 2013, Watford

For further information on the above events please contact carla@housingdiversitynetwork.co.uk.



The Housing Diversity Network's Equality & Diversity Briefings are produced in association with the Centre for Local Economic Strategies (CLEES). For further information on CLEES please visit their website at www.cles.org.uk, contact Matthew Jackson on 0161 233 1928 or email Matthewjackson@cles.org.uk