

Future of supported and sheltered housing

13 December 2016

What we will cover

1. Government policy, timetable and announcements
2. Implications for providers and local authorities
3. What is still to be decided?
4. Findings from the DWP/ CLG research into the sector
5. Scope of consultation and key questions
6. Questions and comments

September announcement – LHA cap + local system



“we will bring in a new funding model which will ensure that the sector continues to be funded at current levels”

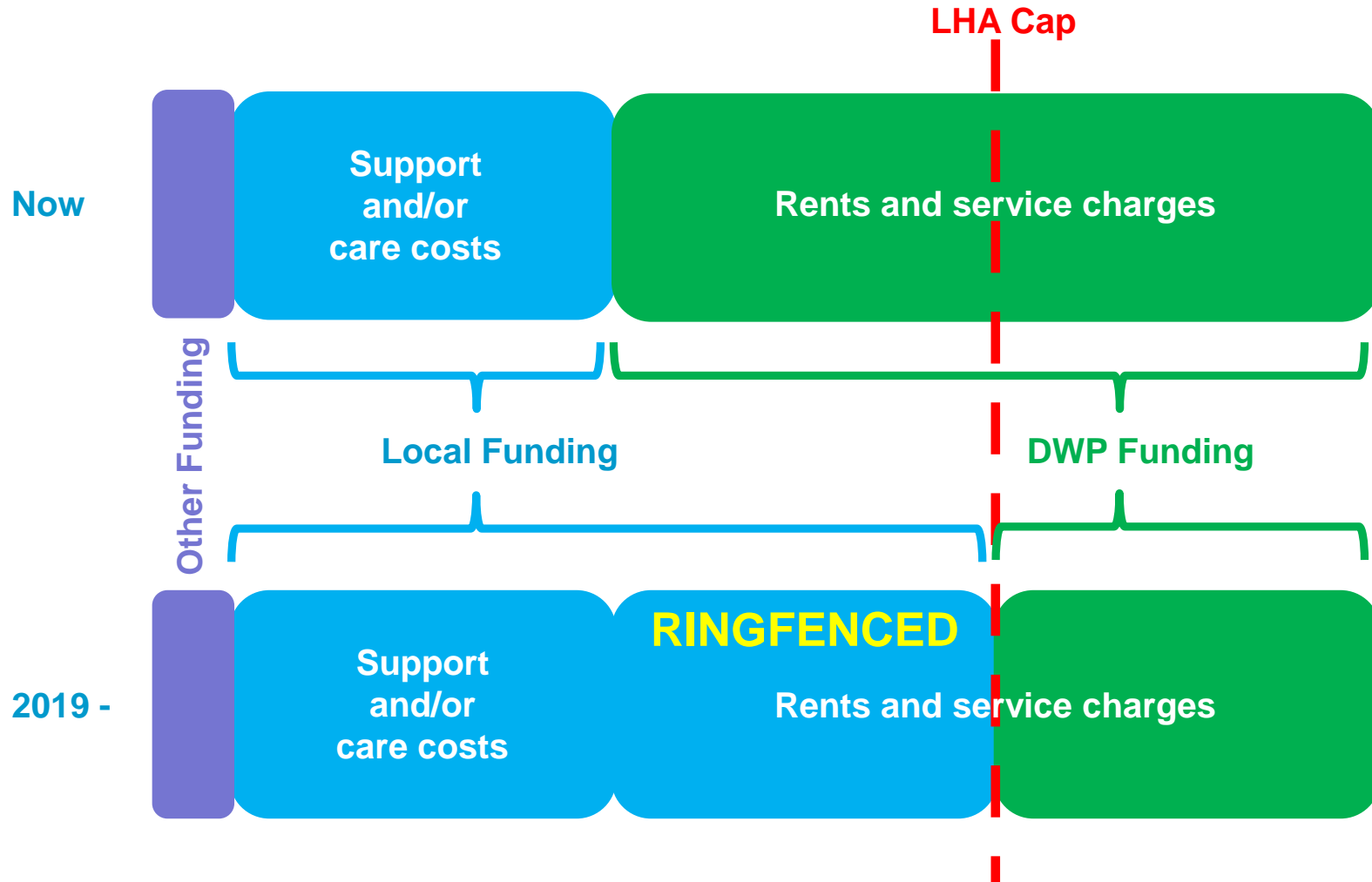
Government announcement

- LHA cap will apply to all tenants from 2019
- Housing costs paid through benefit system up to LHA level
- No Shared Accommodation Rate – one bedroom LHA rate for under 35s in supported housing

Government announcement

- Local authority top-up, with ring-fenced funds allocated by DCLG
- A different solution for short-term transitional services
- Rent cut for supported and sheltered from April 2017 – except refuges, alms houses, co-ops and ‘specialist supported housing’

How will schemes be funded?



Federation response

We welcomed:

- No LHA cap until 2019
- No Shared Accommodation Rate
- Pledge to fund housing costs to the same extent as they are currently
- The ring fencing of funds and the recognition of the value of supported and sheltered housing

Research into size, scope and cost of the sector

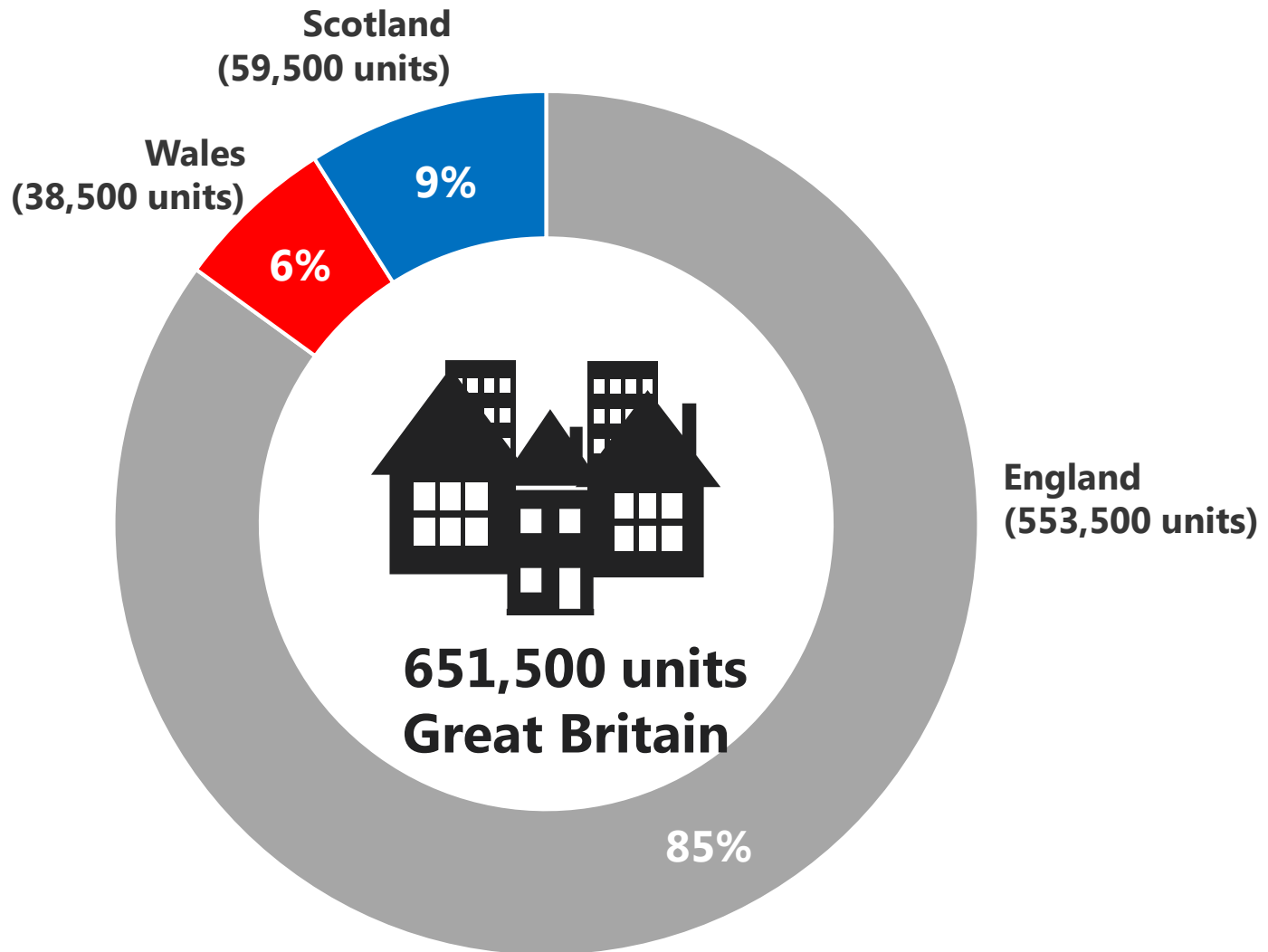


Supported accommodation review

The scale, scope and cost of the supported housing sector

November 2016





Source: Local authority survey. Base: 83 Commissioners. Fieldwork dates: 19 October – 2 December 2015

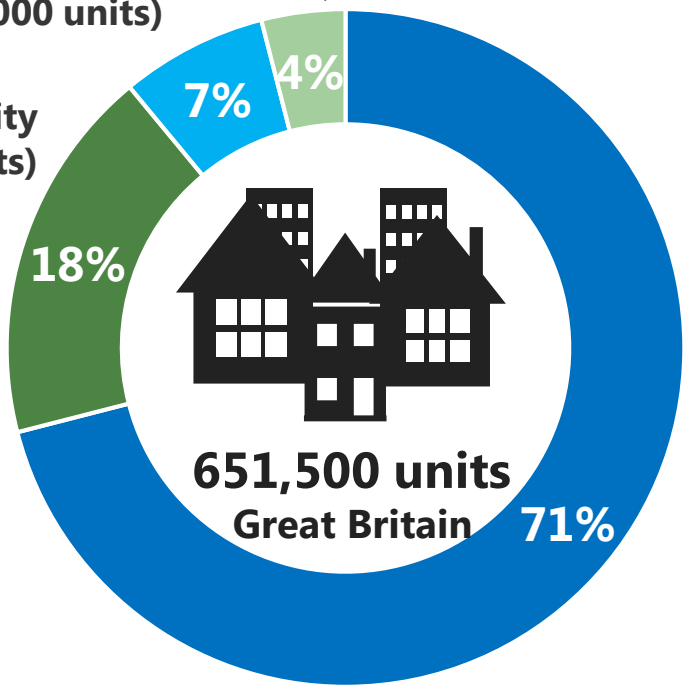


Ipsos Public Affairs

**Other provider
(25,500 units)**

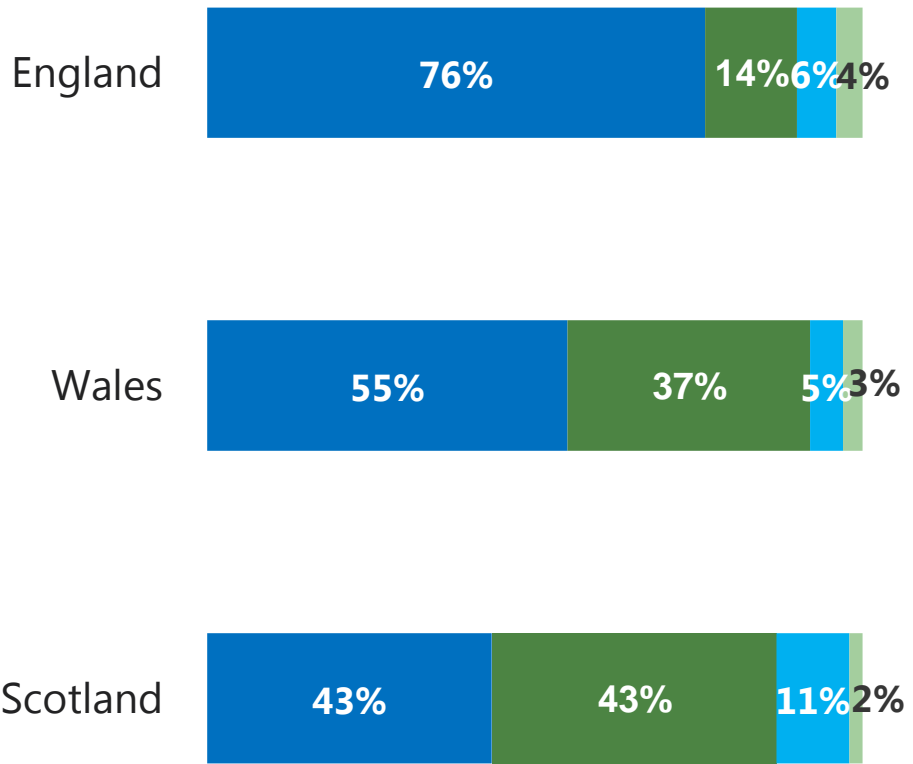
**Registered charity or
voluntary organisation
(44,000 units)**

**Local authority
(117,000 units)**

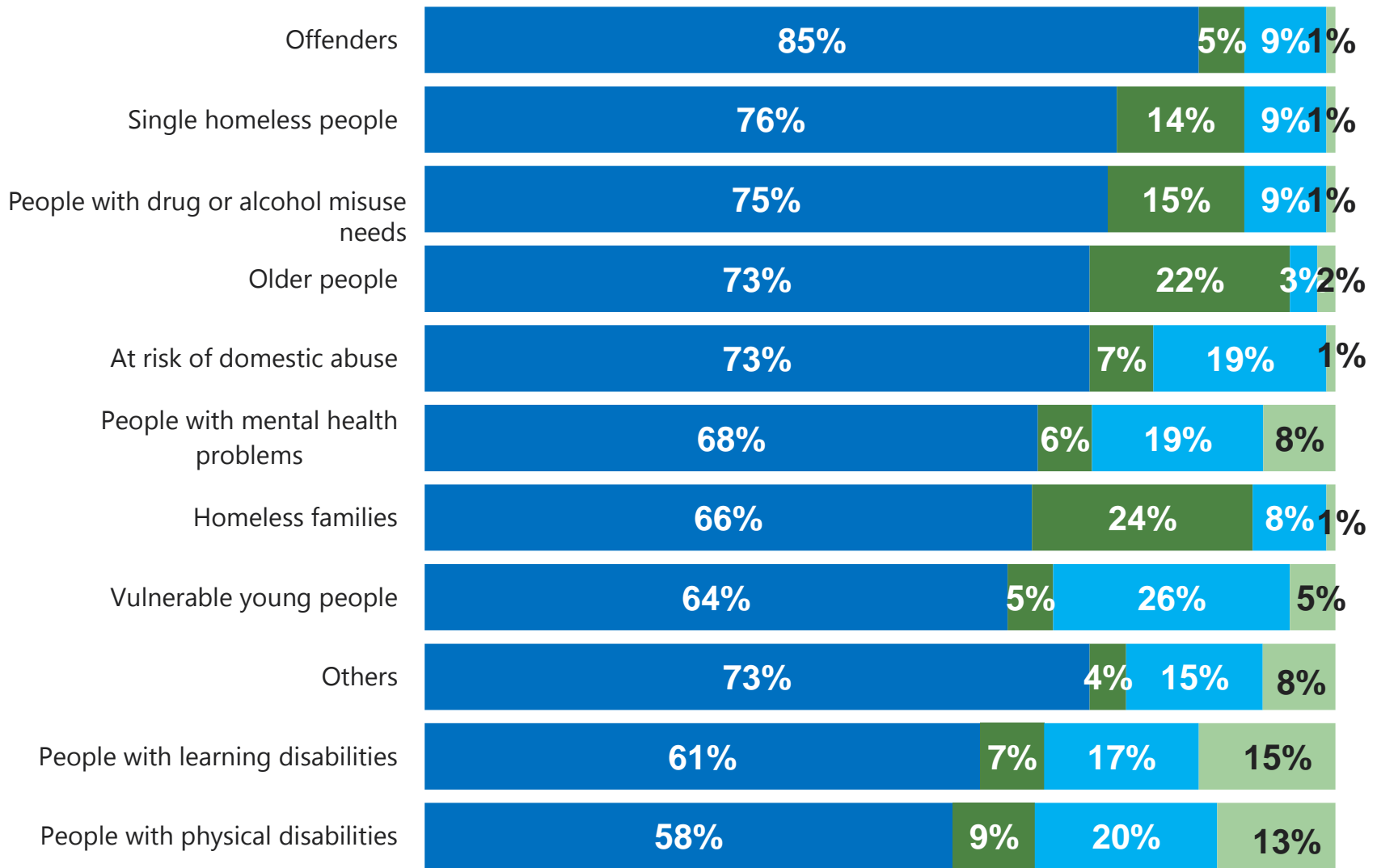


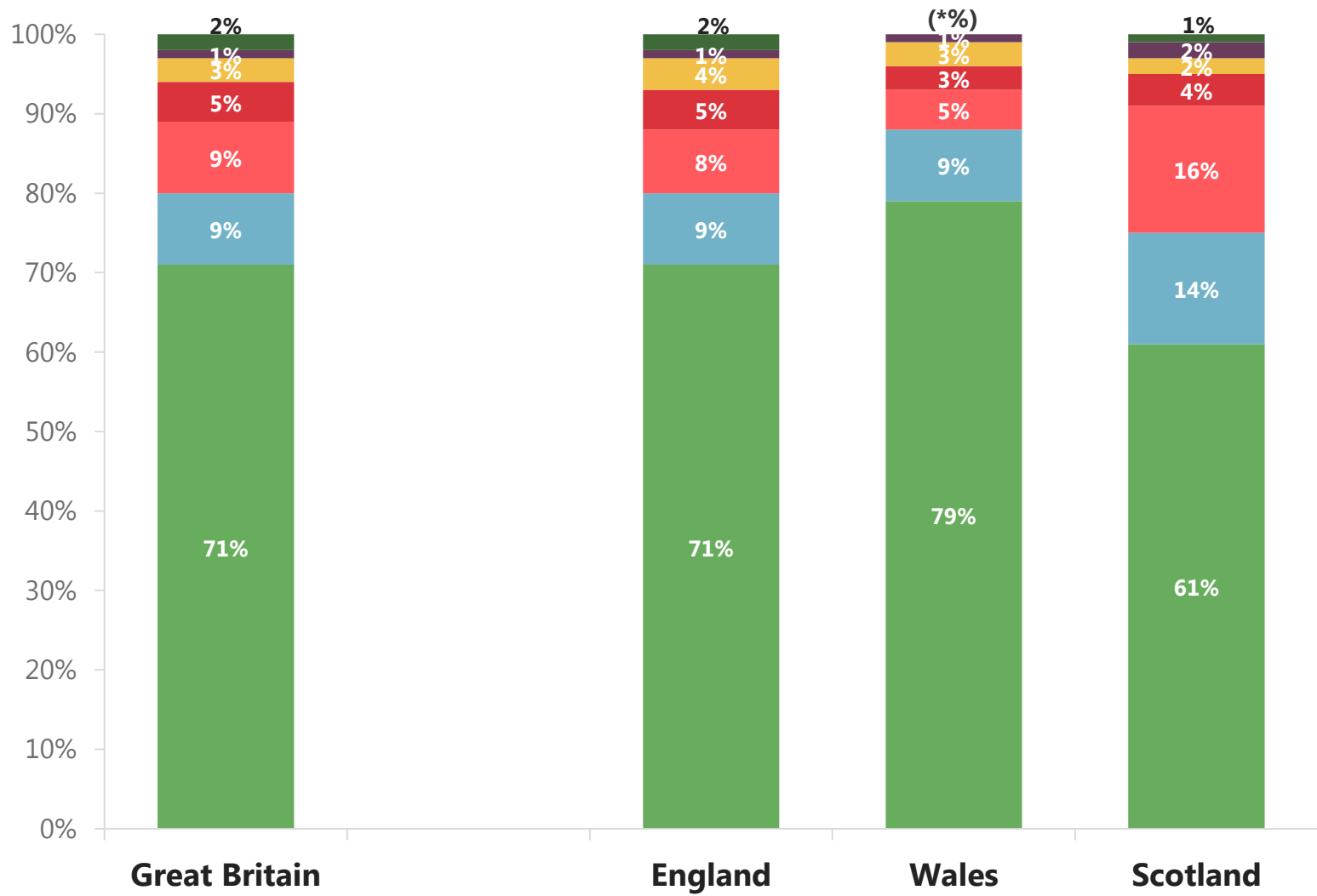
**Housing association
(465,000 units)**

■ HA ■ LA ■ Charity/ vol ■ Other



■ Housing Association ■ Local Authority ■ Charity/ voluntary organisation ■ Other





- For older people
 - Hostels
 - For young people (16-25)
 - Others (not classified)
- For disabled people
 - For people with mental health problems
 - Refuges and safe houses

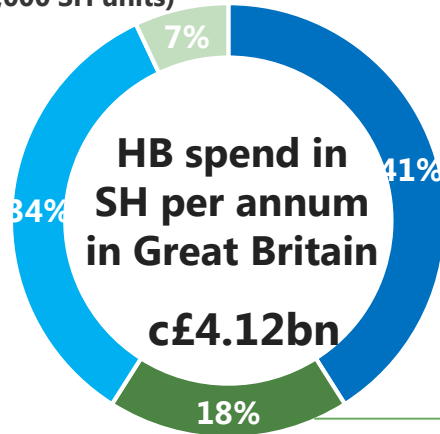


Ipsos Public Affairs

Source: Local authority survey. Base: 83 Commissioners. Fieldwork dates: 19 October – 2 December 2020

Working age people NOT in Specified Accommodation
(£0.30bn – 32,000 SH units)

Working age people in Specified Accommodation
(£1.42bn – 157,500 SH units)

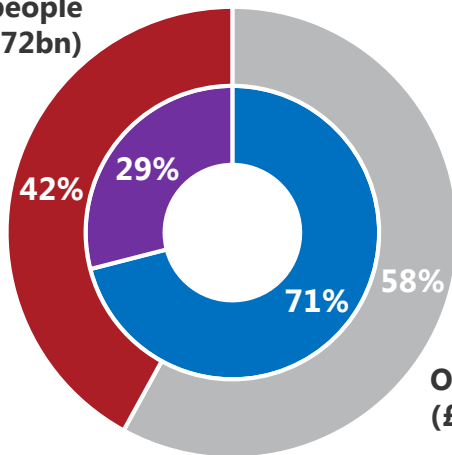


Older people NOT in Specified Accommodation
(£1.67bn – 359,000 SH units)

Older people in Specified Accommodation
(£0.73bn – 103,000 SH units)

Older people vs working age Supported Housing spend and units

Working age people
(£1.72bn)

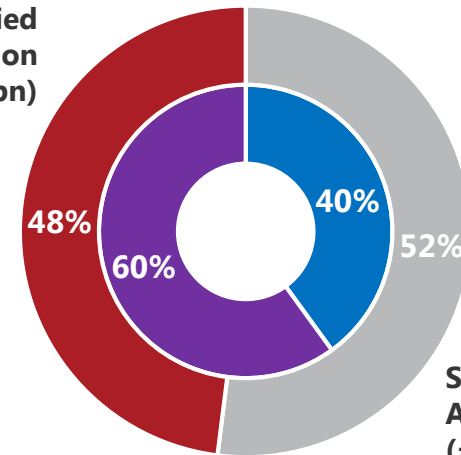


Older people
(£2.41bn)

Outer pie: % of total SH HB Spend
Inner pie: % of total SH units

Specified vs non Specified Accommodation spend and units

Non Specified Accommodation
(£1.97bn)



Specified Accommodation
(£2.15bn)

Outer pie: % of total SH HB Spend
Inner pie: % of total SH units

Sources: Local authority survey, provider survey and CORE Social lettings 2014/15 (DCLG).
Base: 177 Housing Benefit team respondents, 83 Commissioners and 65 providers across Wales and Scotland.

Consultation and timetable



Department for
Communities and
Local Government



Department
for Work &
Pensions

Funding for Supported Housing

Consultation

November 2016
Department for Communities and Local Government
Department for Work and Pensions

- Deadline Feb 13th
- Green Paper to follow Spring 2017 with more detail
- Autumn 2017 – detailed model announced
- Shadow year arrangements in place
- Commencement of new funding model

5 key areas the consultation will cover

The how, *not* the what:

1. Fair access to funding, including the detailed design of the ring fence and any additional protections
2. Clarifying local roles and responsibilities
3. Arrangements to provide oversight and assurance
4. The appropriate balance between local flexibility and stability for providers
5. Developing a funding model for short term accommodation, including hostels and refuges

The consultation does not cover...

- Should the LHA cap be part of the system?
- How local need should be assessed and sizing of the pot
- Should existing tenants should be protected?
- How the system will operate in two tier authorities
- Impact on sheltered housing
- Impact of the rent cut

What will the local system look like?

Issue: We were concerned about any localisation of housing spend. How do we achieve certainty through this approach? Can we?

Key questions:

- What local roles and responsibilities?
- Collaboration across different types of commissioning body?
- National or local commissioning framework?
- Statutory duties? Ring fence within ring fence?
- Oversight and assurance – what is appropriate?
- Would top-up follow the individual or scheme?
- How will the money flow, and how much, to where?
- Transitional protection for existing services or tenants?
- Separate model for short-term services?

Starts at Home campaign

NATIONAL
HOUSING
FEDERATION

Join our festive action

Invite your local MP and councillors to champion supported housing by visiting an end of year celebration for residents.

starts at
home

starts at
home

STORIES - ABOUT SUPPORTERS RESOURCES CONTACT

Peter's friend died on the streets and that told him he had to make a big change in his life.

Supported housing gave Peter the security he needed to transform his life.

READ PETER'S STORY



ABOUT

Starts at Home

The Starts at Home campaign tells positive stories of people who have gained independence through supported housing.

We are an alliance of housing associations, charities and cross-party politicians and are calling on the Government to ensure that every person who needs extra support has a home that meets their needs.

JOIN THE CAMPAIGN



Ways to get involved and find out more

- Email **supportedhousing@housing.org.uk** with queries
- Visit the website: <http://www.startsathome.org.uk/>
- See DWP [research](#) and [consultation](#)
- Respond sooner rather than later

Consultation questions (1 of 2)

- 1) The local top up will be devolved to local authorities. Who should hold the funding and in two tier areas should the upper tier authority hold the funding?
- 2) How should the funding model be designed to maximise opportunities for local agencies to collaborate, encourage planning and commissioning across service boundaries, and ensure local commissioning bodies have fair access to funding?
- 3) How can we ensure that local allocation of funding by local authorities matches local need for supported housing across all client groups?
- 4) Do you think other funding protections for vulnerable groups, beyond the ring fence, are needed to provide fair access to funding for all client groups, including those without existing statutory duties (including for example the case for any new statutory duties or any other sort of statutory provision)?
- 5) What expectations should there be for local roles and responsibilities? What planning, commissioning and partnership and monitoring arrangements might be necessary, both nationally and locally?
- 6) For local authority respondents, what administrative impact and specific tasks might this new role involve for your local authority?
- 7) We welcome your views on what features the new model should include to provide greater oversight and assurance of tax payers that supported housing services are providing value for money, are of good quality and are delivering outcomes for individual tenants?

Consultation questions (2 of 2)

- 8) We are interested in your views on how to strike a balance between local flexibility and provider/developer certainty and simplicity. What features should the funding model have to provide greater certainty to providers and in particular, developers of new supply?
- 9) Should there be a national statement of expectations or national commissioning framework within which local areas tailor their funding? How should this work with existing commissioning arrangements, for example across health and social care, and how would we ensure it was followed?
- 10) The Government wants a smooth transition to the new funding arrangement on 1 April 2019. What transitional arrangements might be helpful in supporting the transition to the new regime?
- 11) Do you have any other views about how the local top-up model can be designed to ensure it works for tenants, commissioners, providers and developers?
- 12) We welcome your views on how emergency and short term accommodation should be defined and how funding should be provided outside Universal Credit. How should funding be provided for tenants in these situations?